

## AQ500V3 Development Kit

The AQ500V3 development kit gives you the power to develop custom solutions using our sensors and development platform. Our kit gives you the tools you need to evaluate our products, before scaling production to a unit designed to meet your exact specifications.

We provide fully-functional hardware with code libraries and samples designed to get you up and running with our wide range of sensors. This code will allow you to design custom applications tailored to suit your demands.

Contact us for volume pricing and custom development.

### Typical Applications

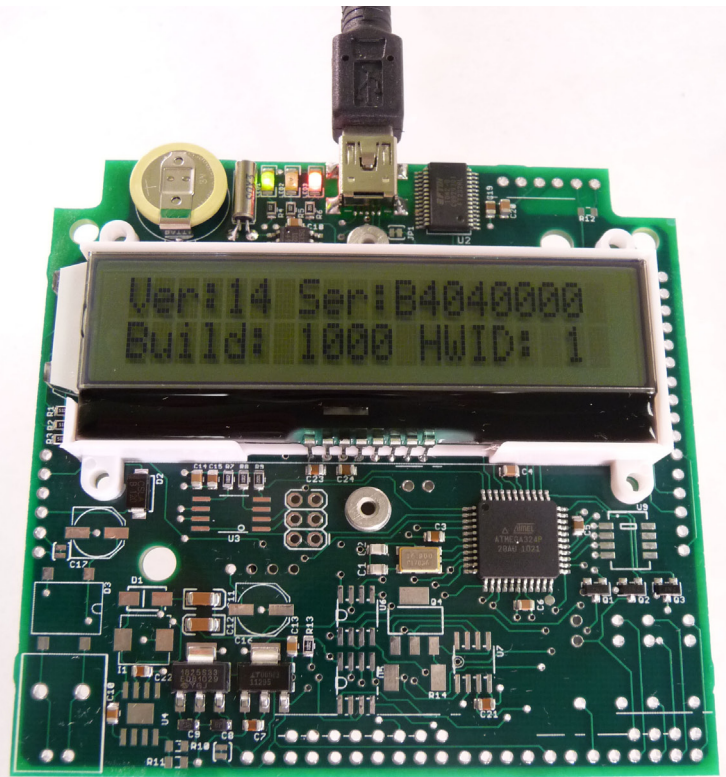
- Environmental / Sampling Data Loggers
- Industrial Controllers / Transmitters
- Greenhouse / CO2 Generator Controllers
- Remote Sensor Display Systems
- Computer-Connected Sensing Units

### Software Features

- Easy to use development kit programs over USB with included boot loader
- Included software libraries for interfacing with our sensors and other peripheral devices
- Sample code available
- Compile using the WINAVR tool chain with AVRStudio from Atmel

### Hardware Features

- Multiple industrial outputs for integration with existing technology:
  - 2- RS-485 Serial outputs
  - 1- 4-20mA Powered Loop Output
- USB to UART interface for PC communication and programming
- Real-time Clock with coin-cell battery backup
- 2Mbit EEPROM for storing data logs and measurements
- 24VAC/DC input voltage accepted through switching regulator
- 2 installed low current relays
- 5V/3.3V supply buses for powering external sensors and devices
- Reverse polarity battery connector
- 20x2 Character Display backlit in controllable RGB colors
- 2 Status Indicator Lights
- 3 1A MOSFETS for controlling external buzzers and relays with PWM capabilities
- Spare microcontroller pins brought out to .1" pins for interfacing with additional circuitry



# AQ500v3 Pinout

